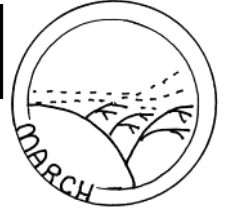


# SPOTLIGHT



## 31 DAYS IN MARCH

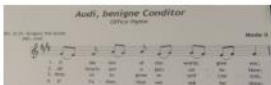
St. Michael and All Angels  
Lydbury North

Sunday March 10th at 5.30 p.m.

### Choral Evensong sung by **Con Anima**

Director: **George Baker**

Following the service there will be a short concert of secular music loosely following the sequence of the *Four Seasons* reflecting on the feelings they evoke. It will embrace music ranging from the 13<sup>th</sup> century to the 17<sup>th</sup>, including items sung in Latin, Italian, French, German and, of course, various forms of early English.



Donations to the Church Reef Fund would be most acceptable - thank you.

**christian aid**

## SOUP LUNCH

METHODIST CHURCH HALL  
BISHOP'S CASTLE  
Fridays from:  
March 1st - April 19th  
12 noon - 1.30pm

Join Friends old and new for a simple lunch and chat!

**ALL WELCOME**  
**christian aid**

Donations to **CHRISTIAN AID**  
Further information from Hazel Cribb - 620470

**Live Music at Clun Memorial Hall**  
**Saturday 9th March, 7.30pm**  
Tickets £9 available from  
The White Horse Inn, Bright Flowers, Richards  
Hairdressers, The Maltings Café. BAR & RAFFLE

## Rapsquillian & Friends

Please note that whilst every effort is made to ensure that all event details published are correct the producers of Spotlight cannot be held responsible for any incorrect information or changes to published events that may occur  
Spotlight is published by Enterprise South West Shropshire, Enterprise House, Station Street, Bishop's Castle, SY9 5AQ.  
Entries for Events are Free and may be left at Enterprise House or you can contact  
Gail Pickford on 01588 638038.  
Spotlight is now available on-line at [www.bishopscastle.co.uk](http://www.bishopscastle.co.uk)

Enterprise House IT Resource Centre, Station Street, Bishop's Castle, Shropshire. SY9 5AQ  
Tel/Fax: 01588 638038 e-mail: [enterprise.house@bishopscastle.co.uk](mailto:enterprise.house@bishopscastle.co.uk) [www.bishopscastle.co.uk](http://www.bishopscastle.co.uk)

## March 2019

1st	Flicks in the Sticks present "The Wife" 7.30pm at Bedstone & Hopton VH. (Borderlands Film Fest) Call 01547 530282
1st	Christian Aid Soup Lunches Fridays until 19th April 12-noon-1.30pm at Bishop's Castle Methodist Church
1st	Live Music at the White Horse Inn, Clun with "Under the Fridge" from 9pm
2nd	Antique & Flea Market 9am-4pm at Bishop's Castle Town Hall
2nd	Clungunford Players present "Death at the Bog" a murder mystery 7.30pm at Aston on Clun VH. £3 entry. Bring and share food and drink. Call 01588 660438/660653 to book.
2nd	St Georges School, Clun Coffee Morning & Jumble Sale 10am at Hightown Community Room
2nd	Fairtrade Big Breakfast, at the White Horse Inn, Clun
2nd	Clun Valley YFC Live Music with "Blind Eye" at Newcastle Community Centre 8pm Tickets £10. Call 01588 640331 or 07581204731
2nd	Poems and Prose 7.30pm at The Sun Inn, Clun.
3rd	Antiques Market in Ludlow Town Square 9am-4pm
5th	Flicks in the Sticks presents "A Star is Born" 7.30pm at Lydbury North Village Hall. Call 01588 680302
5th	Clun WI Meeting 7.30pm at Haslehurst Community Room
5th	Onny Valley Social Club Fish & Chips & Skittles 1pm at Norbury Village Hall. Call 01588 650634 or 07779460223.
6th	BC Film Society present "Sweet Country" 8pm at The Three Tuns, Bishop's Castle. Call 01588 680445
6th	Lent Lunches 12.30pm at Marton Village Hall, Soup, Bread, Cheese, Biscuits, Tea & Coffee. £7 every Wed till 17th April. Proceeds to St Marks Church, Marton.
6th	Castle Voices Meet 7-8.30pm at Bishop's Castle Town Hall. New singers welcome. No audition or ability to read music required. Call 01547 550158 for info. Also on 13th, 20th & 27th March
7th	Coach Trip to Malvern Theatre to see "Rough Crossing" by Tom Stoppard. Call 01588 640506 for info
7th	Flicks in the Sticks present film "Shoplifters" 7.30pm at Leintwardine Community Centre
7th	Jam Night at the Vaults, Bishop's Castle from 9pm
8th	Bishop's Castle Tennis Club Quiz. 7pm at The Three Tuns. Tables of 6. £5 per person. Raffle. Email <a href="mailto:jackson.annemarie@btinternet.com">jackson.annemarie@btinternet.com</a> or call 01588 638566 to book .
8th	Storytelling "Gawain and the Green Giant" 7.30pm at Bishop's Castle Town Hall. Call 01588 630023
8th	BC Footpath Walking Group Walk "Long Mynd" (4-6m) Meet at Harley Jenkins CP at 9.30am. Call 01938 561608 for info
8th	Flicks in the Sticks present "The Seagull" New production. 7.30pm at Bedstone & Hopton VH. (Borderlands Film Fest) Call 01547 530282.
8th	Flicks in the Sticks present "Funny Cow" 7.30pm at Marton Village Hall.
8th	Flicks in the Sticks present "Bohemian Rhapsody" 7.30pm at The Discovery Centre, Craven Arms. Call 01588 676060 for info/booking
8th	Fairtrade Tea Party at The Maltings Café, Clun 2.30pm-4pm
8th	Flicks in the Sticks present "The Wife" 7.30pm at Knighton Community Centre
9th	Flicks in the Sticks present "First Man" 7.30pm at Chapel Lawn Village Hall

## March 2019

9th	Live Music at Clun Memorial Hall with “Rapsquillian and Friends” 7.30pm. Tickets £9 available from White Horse Inn, The Maltings Café, Richards Hairdressers or Bright Flowers. Bar & Raffle
10th	Concert Choral Evensong sung by “Con Anima” 5.30pm at St Michael & All Angels Church, Lydbury North. Donations to the Church Roof
12th	Mainstone WI Meeting “Encaustic Craft” with Sarah Screen. 7.30pm at the Village Hall
12th	SWSHAS talk “The History of Sabrina Sydney” with Kate Croft 7.30pm at The Church Barn, BC
13th	Marches Embroiderers talk “Landscape” with Cas Holmes. 3.30pm at Craven Arms Community Centre (CasCA) Call 01588 630663 for info
13th	BC Footpath Walking Group Walk “Hundred House” (7.6m) Meet at Harley Jenkins CP at 9.30am. Bring packed lunch Call 01588 630375 for info
13th	Bettws WI Meeting 7.30pm at the Village Hall.
13th	Flicks in the Sticks present “Smallfoot” 6.30pm at Clun Memorial Hall.
14th	Live Music at the Vaults, Bishop’s Castle from 9pm
14th	Flicks in the Sticks present “A Star is Born” 7.30pm at Leintwardine Community Centre. Call 07572442903
14th	Marches Embroiderers Workshop “From the Land” with Cas Holmes. 10am-4pm at Aston on Clun Village Hall. Booking required call 01588 630663
14th	Bingo at Clun Memorial Hall. 7.30pm. Proceeds to Memorial Hall Funds. Also on 28th March.
14th	Norbury & District WI Meeting 7pm at Norbury Village Hall
15th	Live Music with “Knight & Spiers” 8pm at Bishop’s Castle Town Hall. Call 01588 630023 for info/booking or see <a href="http://www.bishopscastletownhall.co.uk">www.bishopscastletownhall.co.uk</a>
15th	BC Footpath Walking Group Planning Meeting at Kerry Rise, Bishop’s Castle. 10.30am. Call 01588 638163
15th	Flicks in the Sticks present “Cold War” 7.30pm at Knighton Community Centre.
15th	Litter Picking in BC. Meet at The Auction Yard at 10am.. Call 01588 630531 . Bring Hi Vis Jacket.
15th	Live Music at the White Horse Inn, Clun with “Blind Eye” from 9pm
16th	Bishop’s Castle Farmers Market 9am-1pm in the Town Hall.
16th	Flicks in the Sticks present “Smallfoot” 5.30pm at The Discovery Centre, Craven Arms. Call 01588 676060
16th	Flicks in the Sticks present “First Man” 7.30pm at Everest Hall Llamfairwaterdine.
16th	Flicks in the Sticks present “The Wife” 7.30pm at Aston on Clun Village Hall
17th	Antiques Market in Ludlow Town Square 9am-4pm
18th	BC Footpath Walking Group Walk “Roundton” Meet at Harley Jenkins CP at 9.30am. Bring packed lunch. Call 01588 620470 for info
19th	BC WI Meeting “Men in Sheds” with Tony Wilson 7.30pm in the Methodist Hall, Bishop’s Castle
20th	BC Film Society present “The Illumination” 8pm at The Three Tuns, Bishop’s Castle. Call 01588 680445
21st	Lydbury North WI Meeting “Hands on Painting Tiles” with Splat & Splodge. 7.15pm at the V.H.
21st	Live Music at the Vaults, Bishop’s Castle from 9pm
21st	Presentation by Dr Alison Weeks “The Oceans & The Changing Climate: Can we change the course of Global warming?” 7.30pm at The Methodist Church, Clun. Refreshments. Free entry. Donations Welcome.

## March 2019

23rd	Spring Music Event with Gareth Rees-Roberts (latin American Guitar) 11am-2pm at Aardvark Books, Brampton Bryan.
23rd	Macmillan Coffee Morning 10am-12noon at Marton Village Hall.
23rd	Art Exhibition by Alan Jefferies at Bishop's Castle Town Hall. Continues until 20th April
23rd-24th	Wedding Venue Open Weekend 10am-4pm at Bishop's Castle Town Hall. Prosecco from 12noon each day. Call 01588 630023 for info
26th	BC Footpath Walking Group Walk "Crow's Nest" (5m) Meet at Harley Jenkins CP at 9.30am. Call 01588 638999 for info
27th	SWS Gardening Club talk "Life as a Gardening Editor" with Tamsin Westhorpe (gardener at Stockton Bury Gardens) 7.30pm at Lydbury North Village Hall
28th	Live Music at the Vaults, Bishop's Castle from 9pm
29th	Charity Quiz 7pm at Lydbury North Village Hall. Teams of 4 £20 per team. Bar. Call 01588 630165 to enter a team or email. Glynn.roberts@mac.com. Fundraiser for Air Ambulance and Ruddi's Retreat.
29th	Live Music at the White Horse Inn, Clun with "Danger Inc." from 9pm
30th	Day Level & Val Littlehales entertain. 7.30pm at Bishop's Castle Town Hall. Call 01588 630023
30th	Jumble Sale 2pm at Norbury Village Hall. Sandwiches, Cakes, Cream Teas. Proceeds to Norbury Church
30th	Arts Alive present Daniel Llewelyn-Williams in "A Regular Little Houdini" 7.30pm at Chapel Lawn Village Hall. Tickets £10/£5. Call 01547 530258 to book. See www.aregularlittlehoudini.co.uk
31st	Mothers Day Market 10am-4pm in Ludlow Castle Square.
31st	Live Music at the White Horse Inn, Clun with "Tris Walrond" from 5.30pm
31st	RSPB walk around Bury Ditches led by Dave Pearce 10:00am, Grid ref SO 334 840. For more info see www.rspsouthshropshire.co.uk

### SpArC Theatre Events - March 2019

**Tickets 01588 630321/638038 [www.sparcetheatre.co.uk](http://www.sparcetheatre.co.uk)**

**Thursday 7th 7.30pm**  
**Tickets £5/£4**



**Film: "Bohemian Rhapsody"**

Bohemian Rhapsody is a foot-stomping celebration of Queen, their music and their extraordinary lead singer Freddie Mercury. Freddie defied stereotypes and shattered convention to become one of the most beloved entertainers on the planet. The film traces the meteoric rise of the band through their iconic songs and revolutionary sound. They reach unparalleled success, but in an unexpected turn Freddie, surrounded by darker influences, shuns Queen in pursuit of his solo career. Having suffered greatly without the collaboration of Queen, Freddie manages to reunite with his bandmates just in time for Live Aid. While bravely facing a recent AIDS diagnosis, Freddie leads the band in one of the greatest performances in the history of rock music.

**Friday 22nd 6.30pm**  
**Tickets £5/£4**



**Film: "The Nutcracker & The Four Realms"**

Young Clara needs a magical, one-of-a-kind key to unlock a box that contains a priceless gift. A golden thread leads her to the coveted key, but it soon disappears into a strange and mysterious parallel world. In that world, she meets a soldier named Phillip, a group of mice and the regents who preside over three realms. Clara and Phillip must now enter a fourth realm to retrieve the key and restore harmony to the unstable land. "Disney's latest offers a rollicking adventure, an admirable young heroine, and solid messages about growing in courage" *Plugged in*

**SpArC Theatre Events - March 2019**  
**Tickets 01588 630321/638038 [www.sparctheatre.co.uk](http://www.sparctheatre.co.uk)**

**Sunday 24th 7pm**  
**Tickets £10/£5**



**Live Music - “Gwenifer Raymond” with support from “Alula Down”**

*Gwenifer Raymond is a Welsh multi-instrumentalist, From her roots in Punk and Grunge she began listening to pre-war blues musicians as well as Appalachian folk players, eventually leading into the guitar players of the American Primitive genre. She has since been playing her own moody and often-times manic original American Primitive styled compositions on guitar and banjo . \*\*\*\*\* ‘...a profound talent.’ The Guardian \*\*\*\*\* ‘an immersive debut’ The Observer 8/10 ‘...stunningly confident, in full possession of its art’ Uncut ‘...raw, virtuosic...’ Mojo ‘Its intricate folk melody is Welsh and Celtic in style but American Old West in practice. The rhythmic patterns mimic the swift dynamics of a fiddle with a country twang. Western music was originally influenced by traditional folk music from England, Wales, Scotland, and Ireland; Raymond’s seamless crossover grows from these historically intersecting roots.’ – Stereogum*

**Tuesday 26th 2pm**  
**(all tickets £3)**



**Afternoon Film - “Breakfast at Tiffany’s”**

*1961 Classic starring Audrey Hepburn, George Peppard, and Patricia Neal. Based on Truman Capote’s novel, this is the story of a young woman in New York City who meets a young man when he moves into her apartment building. He is with an older woman who is very wealthy, but he wants to be a writer. She is working as an expensive escort and searching for a rich, older man to marry. “Tiffany’s is actually one of the few films not to be greatly harmed by its flaws. Audrey Hepburn is delicious as Holly and the Henry Mancini score is in the class of elite soundtracks” Empire Accessible Cabaret seating/no steps/ hearing loop/ tea and biscuits £1/ Free Dial-a Ride Bus available from Bishop’s Castle and Lydbury North call 01588 638350 to book. Supported by the Friends of Bishop’s Castle Community, Care Home and Hospital.*

**Thursday 28th 7pm**  
**Tickets £5/£4**



**Film - “A Star is Born”**

*Staring Lady Gaga and Bradley Cooper - “outrageously watchable update of the love story doomed by shifting fame” “A Star Is Born review – a double act to leave you star-struck” Guardian “The new A Star Is Born, directed by Bradley Cooper and starring himself and Lady Gaga, wrings tears from its romance and thrills from a steadfast belief in old-fashioned, big-feeling cinema” NY Times Seasoned musician Jackson Maine discovers — and falls in love with — struggling artist Ally. She has just about given up on her dream to make it big as a singer until Jackson coaxes her into the spotlight. But even as Ally’s career takes off, the personal side of their relationship is breaking down, as Jackson fights an ongoing battle with his own internal demons.*

**Sunday 31st 2.30pm**  
**Tickets £6/£4**



**Live Concert with The Craven Arms Big Band**

*It don’t mean a thing, if Craven Arms Big Band can’t swing ! We have a passion for the swing music of the 30’s and 40’s but that doesn’t stop us playing more modern music if it “swings”! Join us for a wonderful afternoon of music! usual Bar plus Tea and Cake*

## Dates for your Diary April 2019

1st	Art Exhibition by Alan Jefferies at Bishop's Castle Town Hall. Continues until 20th April
1st	Flicks in the Sticks present "A Star is Born" 7.30pm at the Discovery Centre Craven Arms. Call 01588676060
2nd	Clun WI Meeting 7.30pm at Haslehurst Community Room.
2nd	Onny Valley Social Club talk "Memories of Trips" with Jim & Wendy Russell. 2.30pm at Norbury Village Hall Call 01588 650634 or 07779460223
2nd	Flicks in the Sticks present "The Wife" 7.30pm at Lydbury North Village Hall.
3rd	Lent Lunches 12.30pm at Marton Village Hall, Soup, Bread, Cheese, Biscuits, Tea & Coffee. £7 every Wed till 17th April. Proceeds to St Marks Church, Marton.
3rd	Castle Voices Meet at The Town Hall, Bishop's Castle 7-8.30pm. New singers welcome. Call 01547550158 for info. Also on 10th, 17th & 24th April.
3rd	BC Film Society present "Bombshell: The Hedy Lamar Story" 8pm at the Three Tuns, Bishop's Castle
4th	Spring Greens, Cookery Course. Suitable for Vegans & Vegetarians. 10am-2pm at the Discovery Centre, Craven Arms. Call 01588 676060 for info/booking
4th	Jam Night at the Vaults, Bishop's Castle from 9pm
5th	Christian Aid Soup Lunches Fridays until 19th April 12-noon-1.30pm at Bishop's Castle Methodist Church
5th-7th	Ludlow English Song Weekend at Ludlow Assembly Rooms. See <a href="http://www.ludlowenglishsongweekend.com">www.ludlowenglishsongweekend.com</a>
6th	Antique & Flea Market 9am-4pm at Bishop's Castle Town Hall.
6th	Marches Choir & Marches Sinfonia Concert "Puccini & Mozart" 7.30pm at St Johns Church, Bishop's Castle . Tickets £12 from 01588 650448. Children & Students Free
6th/7th	Shropshire Way 80K Festival. Four events; 3.5km fun run, off-road Tusker 10k, Mammoth trail marathon and the flagship SW80K . Call The Discovery Centre, Craven Arms for info on 01588 676060 or see <a href="http://www.facebook.com/ShropshireWay80K">www.facebook.com/ShropshireWay80K</a> .
7th	Live Music at Bishop's Castle Town Hall with "French Horn Connexion & the Holcombe Alphorn Duo" 3pm. Call 01588 630023 for info/booking
7th	ROH Screening of "La Forza del Destino" (Verdi) 2pm at SpArC Theatre, Bishop's Castle. Tickets £13/£8. Call 01588 630321 or 638038 to book or online at <a href="http://www.sparctheatre.co.uk">www.sparctheatre.co.uk</a>
7th	Blakemoorgate Cottages, open above Snailbeach 11am-3pm. See how the miners lived. Call 01743 792294
7th	Ludlow Antiques Market 9am-4pm in the Castle Square.
9th	Mainstone WI Talk "Chiropractor" with Dr Glenn Friedrichson.. 7.30pm at the Village Hall.
9th	Afternoon Film "Patrick" 2pm at SpArC Theatre Bishop's Castle. Tickets £3. Call 01588 630321 or 638038 to book or online at <a href="http://www.sparctheatre.co.uk">www.sparctheatre.co.uk</a> . Accessible Screening
9th	SWSHAS Meeting - Ritherdon Lecture "Charles Darwin: The Shropshire Lad's First Career" with Martin Rudwick. 7.30pm at The Church Barn, Bishop's Castle.
10th	Royal British Legion Meeting 7.30pm at Haslehurst Community Room, Clun.
10th	Bettws WI Meeting 7.30pm at the Village Hall
10th	Flicks in the Sticks present "Bohemian Rhapsody" 7.30pm at Clun Memorial Hall.
11th	Norbury & District WI Meeting 7pm at Norbury Village Hall
11th	NT Live Screening of "All About Eve" at SpArC Theatre, Bishop's Castle 7pm Tickets £12/£8. Call 01588 630321 or 638038 to book or online at <a href="http://www.sparctheatre.co.uk">www.sparctheatre.co.uk</a>

## Dates for your Diary April 2019

11th	Live Music at the Vaults, Bishop's Castle from 9pm
12th	Live Music at the White Horse Inn, Clun with Band TBC from 9pm
13th-14th	Book Fair at Bishop's Castle Town Hall 10am-4pm. Also Cd's & DVD's
13th	Coffee & Muffins at the Green Methodist Chapel (SY15 6SY) 10am-12noon. Call 01588 638056 for info
14th	Shropshire Hardy Plant Society Spring Plant Fair 12noon-3pm at Bayston Hill Memorial Hall.
14th	Ludlow Garden Fair all day in the Castle Square.
14th	Primrose Walk at Walcot Woods, Lydbury North 10am-12noon
15th-19th	"Remarkable Romans" Holiday activities for Children aged 4-1. 1pm-2.30pm at the Discovery Centre, Craven Arms. Call 01588 676060 for info/booking
16th	BC WI meeting "Silk & Stuff" with Sarah Evans 7.30pm at The Methodist Church.
17th	Onny Valley Social Club trip to The Blue Planet & Cheshire Oaks.. Call 01588 650607 or 07971882553 for info and booking.
18th	Ludlow Food & Craft Market all day in the Castle Square.
18th	Live Music at the Vaults, Bishop's Castle from 9pm
18th	Lydbury North WI Meeting "Around the World from East to West" with Eileen Rossington. 7.15pm at the Village Hall.
18th	Marches Embroiderers talk "Upside down, and under water—the story of a crafty life" with Anne Dyer, founder of Westhope College. 1.30pm at Craven Arms Community Centre. Call 01588 630663 for info.
20th	Pams Plant Stall at Clun Methodist Church 10am
20th	Farmers Market at Bishop's Castle Town Hall 9am-1pm
21st	Ludlow Antiques Market 9am-4pm in the Castle Square.
22nd-26th	"Remarkable Romans" Holiday activities for Children aged 4-1. 1pm-2.30pm at the Discovery Centre, Craven Arms. Call 01588 676060 for info/booking
24th	SWS Gardening Club talk "Garden Design" with Christine Scott 7.30pm at Lydbury North Village Hall
25th	Live Music at the Vaults, Bishop's Castle from 9pm
26th	Arts Alive present Emily Hennessey & Sheena Mukherjee in "Kali". Live Performance at Clungunford Parish Hall 7.30pm. Tickets £10/£5/£25. Call 01588 660152 to book.
26th	Live Music at the White Horse Inn, Clun Band TBC from 9pm
27th	Bishop's Castle Antique & Flea Market 9am-4pm in the Town Hall.
27th	Live Music at Bishop's Castle Town Hall with Clun Valley Jazz "The Elliott Sansom Trio" 8pm. Call 01588 630023 for info/booking.
27th	The Housman Society Annual Commemoration 3pm at St Laurences Church, Ludlow.
28th	Ludlow Craft & Country Market all day in the Castle Square.
28th	Live Music at the White Horse Inn, Clun with "Jenny & the Germs" from 5.30pm



### Bishops Castle Short Walks - Every Monday 10.30 am

Meet at Enterprise House- Short sociable walks of 30-60 mins in lower part of town.

Ring 01743 255059 for info



# Charity Quiz

Friday 29th March  
Lydbury North Village Hall

Teams of 4  
£20 per Team  
Bar available  
Call 01588 630165 to enter or email  
Glynn.roberts@mac.com.

## PAUL BEBB AUCTIONS -SALE

Regular Auctions held at Bishop's Castle Public Hall, Station, Bishop's Castle. Shropshire  
See website for latest dates [www.paulbebbauctioneer.com](http://www.paulbebbauctioneer.com) or check facebook page  
Tel: 01743 462763 Mobile: 07974 118467

## Enterprise House

Enterprise House • Station Street • Bishops Castle • Shropshire • SY9 5AQ

**01588 638038 Phone/Fax**

**[enterprise.house@bishopscastle.co.uk](mailto:enterprise.house@bishopscastle.co.uk)**

**[www.bishopscastle.co.uk](http://www.bishopscastle.co.uk)**

Booklet Production/Printing  
Label Design & Printing  
Drop-in Computer Access  
Photocopying  
Tickets Invites  
Flyers  
Binding

Document/Photo Scanning  
Poster Design & Printing  
Greeting Cards  
Computer Repairs  
Web Design  
Training  
Faxing



We can help you with your event Publicity  
Posters/Tickets/Flyers can all be produced  
from a single A4 Poster (your design or ours)

## Office to Let

at  
Enterprise House  
£185 +VAT per month

Please enquire on  
**01588 638038**



Citizens Advice Shropshire

Bishops Castle Outreach

Citizens Advice Outreach will be  
open at Enterprise House on the  
following dates:

**Monday March 4th  
& Mon March 18th  
10am-12noon**

### **ENTERPRISE HOUSE OPENING HOURS**

**MON 9AM-5PM, TUES 9AM-7PM, WED 9AM-4PM**

**THURS 9AM-5PM, FRI 9AM-7PM, SAT 10AM-1PM**

**THE OFFICE CLOSSES EVERYDAY FOR LUNCH 1-1.30PM**

Enterprise House IT Resource Centre Enterprise House, Station Street, Bishop's Castle. SY9 5AQ  
Tel/Fax 01588 638038 email:[enterprise.house@bishopscastle.co.uk](mailto:enterprise.house@bishopscastle.co.uk). [www.bishopscastle.co.uk](http://www.bishopscastle.co.uk)

Enterprise House IT Resource Centre Enterprise House, Station Street, Bishop's Castle. SY9 5AQ  
Tel/Fax 01588 638038 email:[enterprise.house@bishopscastle.co.uk](mailto:enterprise.house@bishopscastle.co.uk). [www.bishopscastle.co.uk](http://www.bishopscastle.co.uk)