

## DOCUMENTARY FILM: **BIG V SMALL**

**THURSDAY 12 JANUARY - 7PM**

Adults £7  
Child / Student £4.50

12A



Champion Portuguese big wave surfer has to conquer her fear of drowning, she finds herself locked in combat with long-buried demons from her past under a frozen Finnish lake and with the help of a Finnish free diver.

## AFTERNOON FILM: **TICKET TO PARADISE**

**TUESDAY 17TH JANUARY - 2PM**

All Tickets £4  
Accompanying  
Carers FREE

12A



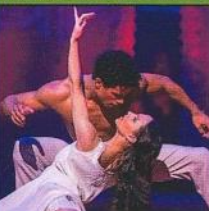
A divorced couple (George Clooney and Julia Roberts) race to Bali, to try and sabotage their daughter's wedding. The bickering duo soon find themselves rekindling old feelings that once made them happy together.

Accessible Cabaret seating/no steps/ hearing loop/ tea and biscuits £1/local Free Bus available. Supported by the Friends of Bishop's Castle Community Care Home and Hospital.

## THE ROYAL BALLET: **LIKE WATER FROM CHOCOLATE** VIA SATELLITE

**THURSDAY 19TH JANUARY - 7.15PM**

Adults £14  
Child / Student £8



Christopher Wheeldon's new full-length ballet brings the magic realism of this famous modern Mexican novel to The Royal Ballet.

## AFTERNOON FILM: **MRS HARRIS GOES TO PARIS**

**SUNDAY 22ND JANUARY - 2PM**

Adults £7  
Child / Student £4.50

PG



A widowed cleaning lady in 1950s London falls madly in love with a couture Dior dress. She embarks on an adventure to Paris that will change not only her own outlook, but the very future of the House of Dior.

## NT LIVE: **THE CRUCIBLE**

**THURSDAY 26TH JANUARY - 7PM**

Adults £13  
Child / Student £8



A witch hunt is beginning in Arthur Miller's captivating parable. Raised to be seen but not heard, a group of young women in Salem suddenly find their words have an almighty power.

## BCFS FILM: **HIT THE ROAD**

**THURSDAY 2ND FEBRUARY - 7PM**

Adults £7  
Child / Student £4.50

12A



Joy, heartbreak and surreal humour follows a chaotic, tender family on a road trip across the rugged Iranian landscape and fussing over the sick dog and getting on each others' nerves.

## FILM: **EMILY**

**THURSDAY 9TH FEBRUARY - 7PM**

Adults £7  
Child / Student £4.50

15



Imagines the transformative, exhilarating, and uplifting journey to womanhood of a rebel and a misfit, one of the world's most famous, enigmatic, and provocative writers who died too soon Emily Bronte.

## AFTERNOON FILM: **THE LOST KING**

**TUESDAY 14TH FEBRUARY - 2PM**

All Tickets £4  
Accompanying  
Carers FREE

12A



Incredible True Story of An amateur historian defies the stodgy academic establishment in her efforts to find King Richard III's remains, lost for over 500 years.

Accessible Cabaret seating/no steps/ hearing loop/ tea and biscuits £1/local Free Bus available. Supported by the Friends of Bishop's Castle Community Care Home and Hospital.

BOX OFFICE 01588 630321 /638038  
WWW.SPACCTHEATRE.CO.UK

## THE ROYAL OPERA: **THE BARBER OF SAVILLE** VIA SATELLITE

**SUNDAY 19TH FEBRUARY - 2PM**

Adults £14  
Child / Student £8



With vocal fireworks, scheming lovers and one very busy barber, Rossini's comic opera is packed with fun and mischief.

## BCFS: **ERIC RAVILIOUS DRAWN TO WAR**

**THURSDAY 23RD FEBRUARY - 7PM**

Adults £7  
Child / Student £4.50

PG



Well-crafted documentary film about Eric Ravilious (1903-1942), the much loved but hugely underestimated British Official War Artist artist.

BCAF Bishop's Castle Film Society

## BCAF: **SCRAPTASTIC SCRAP WORKSHOP**

**FRIDAY 24TH FEBRUARY - 2-4PM**



Come and get creative- load of recycled materials to make whatever you can dream up.

ALL Welcome! Under 9's must be accompanied by a willing helper! FREE with donations to Bishops Castle Arts Festival.

BCAF

## BCAF: **3 NATIONS DRUM WORKSHOP**

**SATURDAY 25TH FEBRUARY: 1.30 - 3.30PM**

Adults £8  
Student / Child £5  
Family £20



Play exciting rhythms on authentic drums in this unique workshop! Guaranteed to be fun, loud, and creative! Be led through an African rhythm, a Brazilian rhythm and a Hip Hop groove by experienced music leaders. Culminating in a collaborative piece of music from 3 nations!

Age 8 +

BCAF

## LIVE MUSIC: **STICKY WICKET SWING DANCE NIGHT**

**SATURDAY 25TH FEBRUARY - 7.30PM**

Adults £15  
Child / Student £8



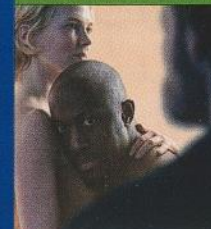
Sticky Wicket will bring a 7 piece band of musicians from his acclaimed Swing Orchestra. Vocalist Linda Morris will perform well known tunes from the Swing era with some Jive and Rock 'n Roll and a dance lesson. Local swing band Anything Goes will start the evening.

BCAF

## NT LIVE: **OTHELLO**

**THURSDAY 2ND MARCH - 7PM**

Adults £13  
Child / Student £8



An extraordinary new production of Shakespeare's most enduring tragedy, a bright, headstrong daughter of a senator; elevated by her status but stifled by its expectations. He's a refugee of slavery; having risen to the top of a white world, he finds love across racial lines has a cost.

## LIVE MUSIC GRAFFITI CLASSICS: **COMEDY CABARET STRING QUARTET**

**SUNDAY 5TH MARCH - 2PM**

Adults £12  
Child / Student £8  
Family £40



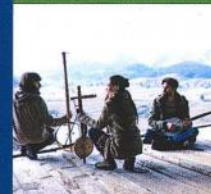
Graffiti Classics bursts the elitist boundaries of the traditional String Quartet with its hilarious all-singing, all-dancing musical comedy show.

"They had the audience falling off their seats with laughter" Western Gazette

## LIVE MUSIC: **SIROM**

**THURSDAY 9TH MARCH - 7.30PM**

Adults £12  
Child / Student £8



Slovenian trio, an acoustic folk avant-garde experimental band. play vividly textured folk music. Fusing handmade and global instruments with fearless sound exploration, the results are unbound by tradition or geography.



## AFTERNOON FILM: OPERATION MINCEMEAT

TUESDAY 14TH MARCH - 2PM

All Tickets £4  
Accompanying  
Carers FREE

12A



Two British intelligence officers hatch an outlandish scheme to trick the Nazis and alter the course of World War II. Based on a true story of deception.

Accessible Cabaret seating/no steps/ hearing loop/ tea and biscuits £1/local Free Bus available. Supported by the Friends of Bishop's Castle Community Care Home and Hospital.

## FILM: LIVING

THURSDAY 23RD MARCH - 7PM

Adults £7  
Child / Student £4.50

12A



A veteran civil servant receives a medical diagnosis that inspires him to move to the south coast and cram some fun into his remaining days. He meets a sunny female colleague who has the pep that had escaped him. Starring Bill Nighy.

## THE ROYAL OPERA: TURANDOT VIA SATELLITE

SUNDAY 26TH MARCH - 2PM

Adults £14  
Child / Student £8



Puccini's final opera is a glorious pageant of rich colour, dance and drama in Andrei Serban's classic staging.

## LIVE THEATRE LONG NOSE PUPPET: THE HUG

SATURDAY 8TH APRIL - 11AM

Adults / Child / Student £8  
Family £35



Based on the heart-warming book. Hedgehog and Tortoise are in search of a restorative hug. Facing rejections along the way, they meet a rather scary badger, an obsessive squirrel, a fabulous fox and an owl who is trying hard to be wise. Beautiful Puppets and witty music, fun, laughter and love.

## THE ROYAL BALLET: CINDERELLA VIA SATELLITE

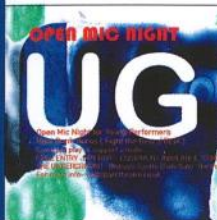
SUNDAY 16TH APRIL - 2PM

Adults £14  
Child / Student £8



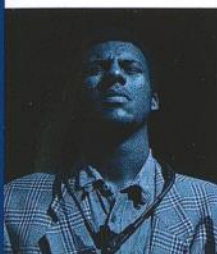
Cinderella celebrates its 75th anniversary this season with new production of the much-loved Royal Ballet fairytale classic and the beauty of Prokofiev's transcendent score.

## LIVE: OPEN MIC NIGHT YOUNG PERFORMERS - FREE THE UNDERGROUND BISHOP'S CASTLE (side Gate Public Hall)



Turn up and play or support a friend  
Drum kit, PA, Amps and Guitars available to use. From 6.30pm once a month.  
Hosted by Dunk Burns.  
• Tuesday 24th January  
• Tuesday 28th February  
• Tuesday 28th March

## LIVE: CLUN VALLEY JAZZ AT SPARC



• Saturday 14th January 8pm  
XHOSA COLE QUARTET 'RHYTHM-A-TING'  
• Saturday 18th February 8pm  
QUENTIN COLLINS FIVE WAY SPLIT QUINTET  
For details and to book your reservations  
Text 07768 504322  
or Email clunvalleyjazz@gmail.com

More events to be confirmed for this season. To keep up to date join our mailing list [liz@sparctheatre.co.uk](mailto:liz@sparctheatre.co.uk) or check [www.sparctheatre.co.uk](http://www.sparctheatre.co.uk)

## IN THE GALLERY



January: Ray Jacobs  
February: Rosemary Hart  
March: Gill Stokes  
April: Chiara Ireland-Morris

See website for opening times.

## DIAL-A-RIDE



For more information on booking the Dial-a-Ride bus for the afternoon films or other events please call 01588 638 350.

BOX OFFICE 01588 630321 / 638038  
[WWW.SPARC THEATRE.CO.UK](http://WWW.SPARC THEATRE.CO.UK)

## WINTER / SPRING 2023

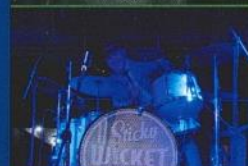
Welcome to our Winter / Spring 2023 programme. Keep up to date with the latest news and events via the website, Facebook and Twitter. Email: [liz@sparctheatre.co.uk](mailto:liz@sparctheatre.co.uk) to join the mailing list.



Box Office & Info  
01588 630321 / 638038  
[www.sparctheatre.co.uk](http://www.sparctheatre.co.uk)

[www.facebook.com/sparctheatre](https://www.facebook.com/sparctheatre)

[@sparctheatre](https://twitter.com/sparctheatre)



SpArc Theatre is located next to the Community College in Bishops Castle just off the A488 from Shrewsbury to Clun.

**Booking:** Tickets can be purchased from SpArc Box Office and Enterprise House IT Centre, by calling 01588 630321 / 638038 or online at [www.sparctheatre.co.uk](http://www.sparctheatre.co.uk). Payment is required at point of purchase.

Concessions for under 18's and students

## SPARC FRIENDS

Become a friend of SpArc Theatre, and as well as pledging your much valued support for the theatre's vibrant future, you also have access to a few exclusive benefits. A years Individual membership is £15 and £25 for a couple.

Running the theatre would not be possible without its dedicated group of volunteers. Volunteers receive full training as well as benefits such as free tickets and advance notice of the upcoming season. For more information please contact Liz at: [Liz@sparctheatre.co.uk](mailto:Liz@sparctheatre.co.uk) or 01588 630321

SPARC THEATRE: Brampton Rd, Bishop's Castle. Shropshire. SY9 5AY. Box Office 01588 630321 / 638038



Enterprise House  
enterprising solutions  
delivered locally



## WINTER / SPRING 2023



SpArc  
THEATRE  
BISHOP'S CASTLE

THEATRE  
FILM  
MUSIC  
NT LIVE

